



Jinney Ring

WEDDINGS



for the difference that is a
Jinney Ring Wedding

visit our website
jinneyring.co.uk

or contact us to arrange a visit
01527 821272
enquiries@jinneyringcraft.co.uk

Jinney Ring Craft Centre
Hanbury B60 4BU (between Droitwich and Bromsgrove)

The Jinney Ring Craft Centre

Set in rural Worcestershire, surrounded by flowing hills and beautiful duck ponds, the Jinney Ring offers an atmospheric and tranquil setting for your wedding celebration.

The Jinney Ring is situated in the picturesque village of Hanbury which is close to Droitwich, Bromsgrove and Redditch and has good access from both the M5 and M42 motorways. It also has good links with local accommodation and therefore, has everything you need to make your day very special indeed!

The Craft Centre has been developed from a 400 year old farm and is housed in rustic buildings with lovely exposed beams and brickwork, it has lovely 'cosy feeling' whatever time of year!

The Jinney Ring also is home to the special events dining restaurant "Ring's". It is this expert team that will provide you with your wedding breakfast which will be both delicious and served with proper care.

Why choose The Jinney Ring for your special day? Aside from the magnificent gardens and great views (out over to the Malvern hills to the left and, closer on the right up to Hanbury Church), the Jinney Ring can offer you something that little bit different for your Wedding day.

We offer you simply "your special day" and we mean it — you decide how it will run with regard to; timings; food; drinks; decoration etc., and you can do as much (or as little) as you want. We can do all the leg work for you or we work with you. We will help you through all of the planning and will make it just how you want it. For this reason every wedding is quite different and we do not have package prices available. Once we understand what you want we will give you a written quotation.

We also have access to an array of creative crafts people, chefs, and professionals here on our site—they can really make your day quite unique!



A Jinney Ring Wedding

There are four types of wedding service that we can offer you from the Jinney Ring, and there are variants within them:



Option one is a Marquee wedding in the gardens by the duck ponds.

With this option, the marquee will be exactly as you specify it, and there is no physical limitation on guest numbers. For flexibility, we hire marquees for each occasion and will work with you to get the right setting and price to match your style and budget. A Marquee wedding also means that your timing is unconstrained as, although the craft centre is open 7 days per week and closes at 5pm each day, you will have privacy within your own area of the garden. After 6pm you will have complete privacy and full use of all of the Centre facilities, (we do not run any other events alongside a wedding party).



Option two is a wedding reception/party that is later in the day and is in our pretty restaurant area (with, or without a courtyard marquee extension (attached to the main building for extra space). This does not have the costs of a full marquee but does have the style!

With this option, the wedding party may have full private use of the Centre facilities from about 4:00pm onwards. Numbers are limited to approximately 100 for a sit down meal or 120 for buffet. We also have several unusual options and ideas to keep your guests busy between your wedding ceremony and your wedding party.

We also have many of different ways of setting out the restaurant area with either round or rectangular tables, and the restaurant can be decorated up to your own individual style.



Option Three is for **Medium sized Wedding celebrations** with daytime guests of around 30 -45 where you would like an afternoon wedding breakfast and possibly a party in the evening with more guests.



At the Jinney Ring we have a lovely light conservatory area with terrific views of the duck ponds and the Malvern Hills. This can easily be made private by dropping the blinds and screening off from the main restaurant area. We can seat up-to 45 people during the daytime. You have various menu options available including our farmhouse menu as well as a bespoke fine dining menu. If you wish to extend your party into the evening the whole restaurant can be exclusively yours after 6pm. And more guests can be invited along.

Option Four is for **small wedding celebrations** with guest numbers of up to 25 we have a conference room that is perfect when decorated for an intimate gathering to celebrate your daytime or evening wedding party, full catering flexibility and facilities are available for the wedding breakfast, as with the other options.



Option 1—A Marquee in the gardens



For wedding parties of upwards of 70 guests a marquee is ideal. Set on the lawn surrounded by gardens and duck ponds the marquee will be situated adjacent to our restaurant and craft centre with views of the ponds and fields uninterrupted to the Malvern Hills.

All marquee weddings include the exclusive use of our fully licensed restaurant building and your own area of the gardens where our experience and highly trained waiting staff will be pleased to greet you with drinks and canapés.

You will be in full control of the colour, style and theme of your marquee. We put a great deal of effort in planning your day in advance and try to cover all the eventualities —we have now sufficient experience in Events Management to ensure that no detail is overlooked.

Whether you require a live band, disco or string quartet our venue can cater for you and we have many local contacts if you are looking for recommendations.

Our site is well set up for a marquee, so you do not need to worry about utilities (electric, water and toilets). Our gardens are also the idea place for a tranquil rest from the festivities or some beautiful wedding photographs!

The cost of a marquee varies, it depends on the number of people; level of décor; dance floor; staging; heating etc. Once we understand individual requirements we can provide you with a quotation after liaising with the marquee company.

Option 2a—An Evening Reception in Ring's Restaurant—with Courtyard Marquee extension

For wedding parties of 70—120 (sit down) where an early evening reception and party is being planned, our rustic old farmhouse style buildings make a really picturesque setting.

The Restaurant and centre facilities are available for this option from about 4:00pm onwards. You would sit down to eat at 6:15pm.

The marquee extension is added to the front entrance of our restaurant building, over the courtyard which has a natural stage area and also a wishing well (for good luck).



The marquee can be used for a welcome reception on arrival. It is an ideal environment to mingle ,perhaps with drinks and canapés and, possibly, some live music or entertainment. You can opt to take the stress away from your Best man and run your speeches in this time so that everyone feels able to relax for their meal.

From here the wedding party and guests make their way into the main restaurant for dinner. The old barn restaurant looks beautiful dressed up for a wedding and the food will be delicious and beautifully presented no matter which option you choose.

Later in the evening the marquee can used for dancing and the stage is an ideal area for a DJ or band.

There are many options for your bar area which can be accessible from the marquee and the restaurant areas.

Option 2b—An Evening Reception in Ring's Restaurant — Main building option (no extension)



For wedding parties of 50—100 where an evening reception/party combination is planned this option works well and uses just the rustic restaurant building. The Conservatory area is ideal or use as a reception area and for dancing later in the evening. The Centre facilities are available for this option from 5:30pm onwards. (This suits a wedding that is later in the day.)

Within the restaurant we can cater for buffets and table waited service. We have a separate bar area and a lot of different table layout plans, with both rectangular and large round tables available.

If you are worried about keeping your guests entertained between your wedding ceremony and the evening reception—we have plenty to keep them occupied here at the craft centre, and we can make arrangements for welcome drinks in the gardens. Please do not hesitate to talk to us about this option.

Option 3—A Medium sized Wedding Reception

The lovely light and airy conservatory at the Jinney Ring makes an interesting and unusual setting for a wedding breakfast — there are probably not too many places where you guests to look out over the ponds and watch the antics of the ducks with such ease!

Our Conservatory area will be curtained off from the main restaurant to give you your own private dining area and you will have access to the gardens throughout your visit.

You can choose whether you want a simple farmhouse menu (a tasty option if you are on a tight budget) or a more luxurious fine dining menu. All service will be to table by our professional staff and we have a full wine and bar service available.

With this option you can choose either a wedding reception meal only or perhaps a full party in the evening.



Option 4—A Small Wedding Reception at the Jinney Ring

Within our conference room we are able to seat 20-25 guests for an intimate wedding reception and can provide you with a fully serviced menu to celebrate your special day, whether this is a 7 course meal or a buffet. We also have a small marquee which can be used for a combination reception and meal in the summer months, please call us to discuss your requirements.



The Wedding Breakfast



Choosing a wedding breakfast is always a difficult task - how do you please everyone? Well in truth you usually can't - but we certainly always try!

How about starting your banquet with some Canapés and Champagne, or a refreshing glass of Pimms? This has a lovely relaxing start to the event and allows your guests to mingle and meet-up.

Once your guests are seated in for the wedding breakfast, our friendly waiting staff will serve your choice of wines and waters followed by the starting course. But how to choose what to eat??.

One approach is to plump for a "basket" of specialities - this way everyone has something they like and the event can have a very informal almost "picnic" feel. It also helps your tables get to know each other.... If this is not your 'cup of tea' we have a whole host of other choices be they hot or cold. You can opt for exquisite a la carte dishes, traditional roast meals, farm house food and all sorts of salads. We can supply you with plenty of "ideas" menus from our restaurant but this is all they are, we love to be challenged with new thoughts from you. We are also able to offer you a good range menu choices for your guests whether these are pre-ordered or chosen on the day.

Serving styles can be important for wedding party too - do you want formal silver service or would you prefer a more informal style?. Our main aim is to serve you in a friendly and unobtrusive manner, delivering hot food 'hot' and cold food cold! We can also put together sumptuous buffet tables, either for the main event or for your evening guests.

We are famous for our desserts at the Jinney Ring - why not choose a selection rather than just one? (one of the lovely parts of our planning process is that you get to taste before you chose!)

Prices vary depending on choice - plan for something in the range of £38 - £42/head for 3 course plus coffee for budgetary purposes.

Example Menu for the Wedding Breakfast (Summer “picnic” style)

Pre dinner

Selection of Canapés and Pimms with lemonade served in the garden

To Start



Rustic bread with extra virgin olive oil and balsamic vinegar
Olives & sun blushed tomatoes
Mixed marinated vegetables
Farmhouse Pork terrine
Rough cut pieces of Chorizo Sausage

To Follow

Cold marinated and roasted fillet of beef
Cold home baked gammon ham
Goats cheese and red onion tart
Bowls of mixed salad with assorted continental leaves, green beans, mixed peppers,
mange tout, spring onions, cherry tomato
Buttered new potatoes
Section of mustards, pickles and dressings

To Finish your meal

Trio of desserts – Summer pudding, Passion fruit cheesecake and Belgian chocolate pot

After your meal

Filter coffee or pots of tea as required with homemade chocolates choose a tea/coffee station
available most of the day/evening

Evening menu

Local cheese selection to compliment cheese wedding cake and assorted fruit
Selection of rustic breads and crackers and kettle chips
Sticky mustard sausage with bowl of salsa
Chicken satay skewers
Mini jacket potatoes



From our Fine Dining "Ring's" Menu A few Ideas for a hot meal

To Start

Deep Fried Dolcelatte Risotto Cakes with a Red Pepper Dressing (V)

Crostini topped with Smoked Trout, Lemon and Dill Sour Cream

Spinach, Cream Cheese and Pine Nut Roulade (V)

Smooth Chicken Liver and Brandy Pâté, Rocket and Orange Salad, Warm Toast



Pork and Apricot Terrine with Salad Leaves and Onion Relish

Main Course

All main courses are served with a selection of fresh vegetables

Goats Cheese and Ratatouille Crumble with Tomato and Basil sauce (V)

Beouf Stroganoff, Tender Strips of Beef Fillet sautéed with Mushrooms in Cream and Brandy served with a Timbale of Long Grain and Wild Rice

Medallions of Pork Tenderloin Wrapped in Pancetta on a bed of Braised Cabbage

Baked Aubergine & Melting Brie on Parmesan & Pine Nut Risotto with Pesto Dressing (V)

Fillets of Fresh Sea Bass, Crushed Potato, Olives and Sun Blushed Tomato with Lemon Dressing

Breast of Chicken with Sautéed Wild Mushrooms and a Cream and Vermouth Sauce

Desserts

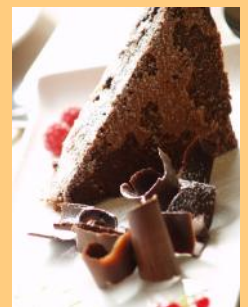
Honey, Fresh Fig and Mascarpone Cream Tart

Tangy Lemon Crepe Gateau with Crème Fraiche

Raspberry and White Chocolate Cheesecake with Raspberry Drizzle

Apple and Caramel Bread and Butter Pudding served Warm with Custard

Marbled Belgian Chocolate Terrine with Dark Chocolate Shavings



Cheese

Cheese Selection with Celery, Grapes and Biscuits

Other Facilities and Services



Wedding Ceremonies

The Craft Centre is situated in the Parish of Hanbury and is served by Hanbury Church which is part of the Bowbrook Group. Contact details for the church are overleaf.

We do not currently hold a licence for civil ceremonies but we do have arrangements with three local establishments where this service can be accommodated— you will then have a very short drive for your reception.

Droitwich Registry Office—St Richards House (Council) 0845 6032859

Hanbury Hall (National Trust), (1 mile away) contact: 01527 821214 or visit www.nationaltrust.org.uk/main/w-hanburyhall

Avoncroft Museum (5 miles away), contact: 01527 831886 or visit www.avoncroft.org.uk

For information on all approved premises in Worcestershire please see: www.worcestershire.gov.uk/cms/registration-services/marriages/approved-premises/

Local Accommodation and Transportation

There are a number of good quality hotels and excellent Bed and Breakfasts very close by for both you and your guests should you need it. Most of these are no more than 10 minutes away from the Craft Centre. Please visit our website for links to these hotels.

Taxis and coach services are available locally and cars may be left over night in our car park at the craft centre (we also have a breakfast service on Sundays!). We have ample car parking for cars and coaches and always make sure that your guests are parked easily and guided to their destination.



Useful Contacts



Hanbury Church (St Mary the Virgin) - situated on a hill only a mile away the Church has spectacular views of the whole area including the Jinney Ring!

Contact Rectory: 01527 821826

Local Registration Offices: Have a look at www.worcestershire.gov.uk/cms/registration-services/marriages/approved-premises.aspx

Florist - Local florist Anna Brian is our florist of choice, she make beautiful arrangements and can advise you on where you can "double up" and use your flowers for church and reception too.. Give her a call and see what she can do for you.

Contact: 07966 440860 website: www.flowersbyannabrian.co.uk

Photographer - our favourite photographers is Claire Ainsworth who has a very is natural style and is part of the team Contact her on 01384 376918 or through website: www.imaginationphotos.co.uk

Cakes - Our Chef at the Jinney Ring can make beautiful cakes to your specifications, just give her an idea and see watch the result melt in your mouth!

Favours - Chocolate Deli, on site here at the Jinney Ring make beautiful favours to grace your table or as gifts for your wedding party. Contact them though our website or www.chocolatedeli.uk.com



Jewellery - Belinda Terry Jewellery, again on site here, Superb Gold and Silver jewellery items made to order, including rings and tiaras (also for hire) Contact: 01527 821610

DJ - We like Richard at www.rpsounds.co.uk, hope you do. We also have a variety of contacts for bands and entertainers so just let us know your preferences and we will try to help.

*Our aim is to give you
the day you want for
your wedding, be it big
or small, formal or
informal.*

*What we can do make
your day extra-special?*

*Call Amanda on 01527 821272 or e-mail
weddings@jinneyringcraft.co.uk to
arrange a viewing*



**For more detail and pictures please visit our
website:**

www.jinneyring.co.uk

